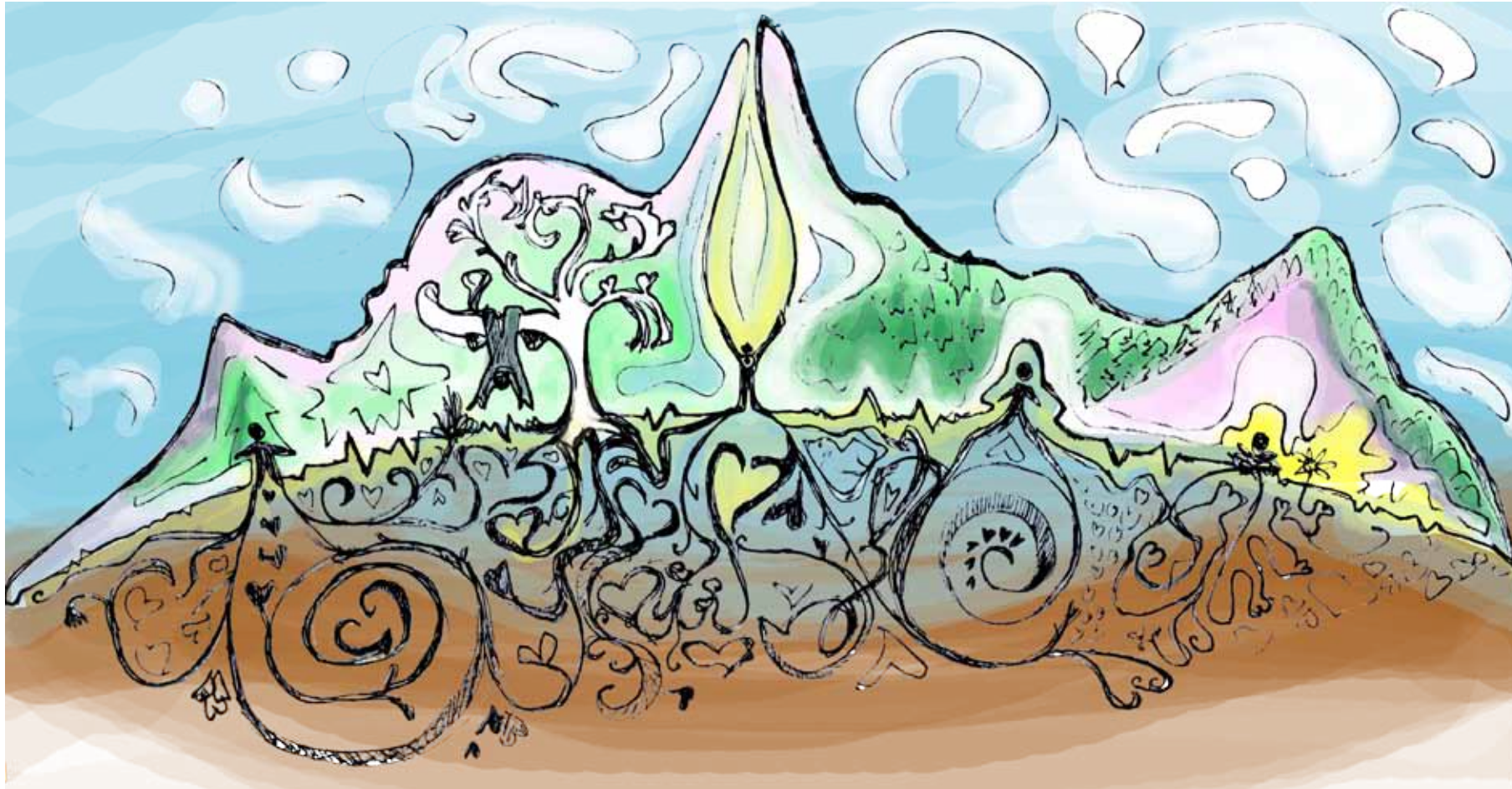


# Get **WiLD** 2011 empowering changemakers



Illustrations by Kara Stonehouse

Leadership starts with our inner selves, and this Get WiLD training provides a setting for you to establish a deeper inner connection. By helping to remove the noise of everyday life you will enable yourself to connect to what is emerging in your life and get in touch

with your deeper purpose. We invite you to immerse yourself and listen inwards. To de-mask and join a safe space away from societal expectations. You will gain a re-calibrated inner compass that allows you to summon balance and focus in the places where decisions are made.

*“If in the past century division, specialization and competition were the recipes for success, this century in its infinite complexity points towards abilities such as intuition, comprehensive view and essential collaboration. The businessman has to put trust in his well-founded intuition to decide which way is the right one and make a safe as well as quick judgement of the situation.”*

*- Göran Gennvi*



Get **WiLD** is a powerful personal leadership and awareness training in nature.

Get WiLD is catered to leaders and social entrepreneurs around the world. It is a one week guided training with a 3-day contemporary vision quest solo at its core for up to 20 participants.

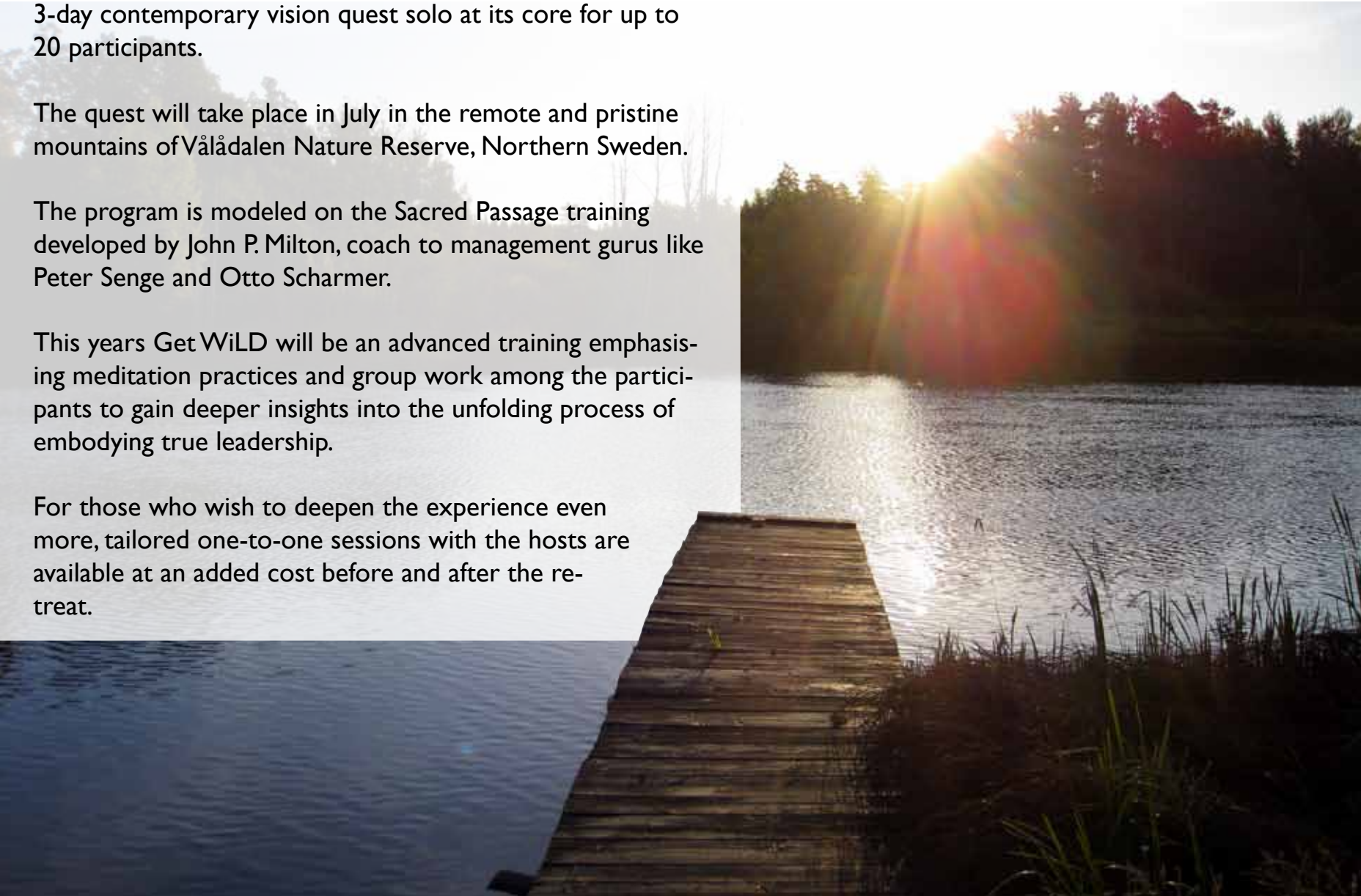
The quest will take place in July in the remote and pristine mountains of Vålådalen Nature Reserve, Northern Sweden.

The program is modeled on the Sacred Passage training developed by John P. Milton, coach to management gurus like Peter Senge and Otto Scharmer.

This years Get WiLD will be an advanced training emphasizing meditation practices and group work among the participants to gain deeper insights into the unfolding process of embodying true leadership.

For those who wish to deepen the experience even more, tailored one-to-one sessions with the hosts are available at an added cost before and after the retreat.

*“Slowing down the mind and letting the answers come without effort, and from a deeper source is a skill that only very few master but so many need.” - Rowan Simonsen*





## THE TRAINING

The training consists of a 3-day solo in nature creating a setting for you to establish a deeper sense of interconnectedness and a deeper connection to the natural world. Before and after the solo you will be engaged in group processes with your co-participants, camp-fire dialogs and meditation practices to heighten your experience.

Solo retreats into wild nature have been used by indigenous peoples around the world during times of transition. They involve being alone in nature, reconnecting to one's spiritual core and developing clarity about one's life purpose. Get WiLD, which is led by experienced guides, is a contemporary version of this ancient native tradition.

Your safety is of utmost importance. The program will ensure that the solo experience takes place in a safe environment. The hosts and guides will help you prepare for, and return from your solo in ways that helps you integrate your inner and outer experiences. The depth of this experience is up to you.

The program will enhance your ability to handle the challenges that life may offer. As Einstein said: "Problems cannot be solved from the same level of thinking that created them". The new acquired clarity and connection from this experience is an invaluable gift for life.

## THE FEE

Early bird special (before April 15th): **610 Euros**.

After April 15th: **700 Euros**.

Contact us to hear about our scholarships for students and people in special circumstances.

The price includes tuition, local logistics and use of campground. The price does not include meals or transportation.

## HOW TO REGISTER

There will only be room for a limited amount of participants which will be assigned on a "first come - first served" basis. Register directly to Mark Hessellund Beanland on [mark@markbeanland.com](mailto:mark@markbeanland.com).

And feel free to contact us for more information.

Mark Hessellund Beanland: [mark@markbeanland.com](mailto:mark@markbeanland.com) or +45 6022 0901, and Rowan Francis Simonsen: [rowan@up-stream.dk](mailto:rowan@up-stream.dk) or +57 311 479 06 56

Once you've signed up you'll receive a detailed letter including all the relevant practical information and payment details.



# THE QUEST

**July 4 – July 10, 2011**

## **Vålådalen Nature Reserve**

Vålådalen is a beautiful valley near Åre, Sweden and has been the home of Sami peoples for generations. We will meet the local caretakers who still preserve the ancient Sami traditions, camp by a pristine lake and gather around a fire in a traditional Sami Kota. For the solo's we will climb the mountain Ottfjället. A mountain ripe with sacred sites and amazing vistas.

Read about the location on [nulltjarnsgarden.se](http://nulltjarnsgarden.se) (Swedish). Or see it on a map here; <http://bit.ly/getwildmap>.



*"Humanity is at a crossroad. Perhaps more than ever we need intellectual and spiritual maturity to help us navigate."*  
- Mark Hessellund Beanland



## THE HOSTS



### **Göran Gennvi**

Has during the last three decades worked as a strategic management consultant mainly focused on sustainability and the inner condition of leaders and how to cultivate deep and lasting change in organizations through executive teams. He has been a strategic management consultant to top executive teams for 20 years and is the founder and CEO of Nature Academy Learning Lab. He is committed to bringing WiLD (“Wisdom, innovation, Leadership and Dialog”) programs out to business and the community. In the beginning of 1990 he started to utilize nature as the main teacher and classroom for innovation and change. Göran lives and works in Stockholm, Sweden.

Web: [naturakademin.se](http://naturakademin.se)



### **Rowan Francis Simonsen**

Is a KaosPilot, founder of Upstream Consulting and a father. He designs and facilitates processes and nature experiences focused on unfolding people’s highest potential and reconnecting to a place of inner strength and peace. His practice is fuelled by a love for and connection with nature. Key words for Rowan’s work is leadership, sustainability, hosting, facilitating, and integrating technology and people centered processes. Rowan lives in Bogota, Columbia.

Web: [up-stream.dk](http://up-stream.dk)



### **Mark Hessellund Beanland**

Is a KaosPilot. He runs a one-man consulting firm specializing in leadership development and social entrepreneurship. He works with organizational culture, personal development and project management. Mark is dedicated to the development of longterm strategies for sustainable development that marries the complex dynamics of culture with the unbridled beauty and delicate balance of nature. Mark lives in Copenhagen, Denmark.

Web: [markbeanland.com](http://markbeanland.com)

